

A Long Experience in Energy Equipment and one Goal:

The Customer's satisfaction.



API 6A

VALVITALIA PAVIA PLANT

VALVITALIA is an Italian Group of valves and other energy equipment manufacturers created to provide to the customers complete packages of products and services.

Italy historically has been the Country with the largest number of valves and other energy equipment manufacturers. Also, Italy has provided to the oil & gas companies excellent engineering services.

Experienced management, quality, performance, availability of large inventory and full dedication to the customer's satisfaction differentiate VALVITALIA from the competition.

VALVITALIA can provide discrete products and/or complete packages, including actuators, gear operators, pre-assembled skirts for gas regulating e metering stations. Among the pre and post sales services, VALVITALIA offers the refurbishment of any type of valve. The availability of stocks represents an additional service to the customers, very difficult to find elsewhere.

PRODUCTS

- **SIDE ENTRY BOLTED**
- **TOP ENTRY VALVE**
- **FULLY WELDED VALVE**
- **THROUGH CONDUIT SLAB GATE VALVE**
- **THROUGH CONDUIT EXPANDING GATE VALVE**
- **WEDGE GATE VALVE**
- **GLOBE VALVE**
- **SWING CHECK VALVE**



TECHNICAL FEATURES

TYPE 54-55 TRUNNION SPLIT BODY TYPE

- COMPACT DESIGN FOR MAXIMUM STRENGTH AND MINIMUM WEIGHT
- COMPONENTS MANUFACTURE FROM FORGING
- SELF RELIEVING SEATS
- BI-DIRECTIONAL
- ANTISTATIC DEVICE
- ANTI BLOW-OUT STEM DESIGN
- PLASTIC POLYMER INSERT FOR SEAT SEALING
- METAL TO METAL SEALING AVAILABLE ON REQUEST
- EMERGENCY STEM SEALANT INJECTION
- TRIPLE BARRIER STEM SEAS
- FIRE SAFE GRAPHITE ON ALL JOINTS
- DOUBLE BLOCK AND BLEED

TYPE 51-52 TRUNNION TOP ENTRY TYPE

- COMPACT DESIGN FOR MAXIMUM STRENGTH AND MINIMUM WEIGHT
- COMPONENTS MANUFACTURE FROM CASTING OR IF REQUESTED FROM FORGING
- SELF RELIEVING SEATS
- BI-DIRECTIONAL
- ANTISTATIC DEVICE
- ANTI BLOW-OUT STEM DESIGN
- PLASTIC POLYMER INSERT FOR SEAT SEALING
- METAL TO METAL SEALING AVAILABLE ON REQUEST
- EMERGENCY STEM SEALANT INJECTION
- TRIPLE BARRIER STEM SEAS
- FIRE SAFE GRAPHITE ON ALL JOINTS
- DOUBLE BLOCK AND BLEED



Side Entry Ball valve 12" API 10000 under assembly



Top Entry Ball Valve 4" / 1 1/16" API 10000

BALL VALVE PRODUCT RANGE API 6A (ISO 10423)

SIDE ENTRY BOLTED	API 2000	API 3000	API 5000	API 10000	API 15000
APPLICABILITY	from DN 1/2" to DN 24"	from DN 1/2" to DN 24"	from DN 1/2" to DN 24"	from DN 1/2" to DN 18"	from DN 1/2" to DN 12"

TOP ENTRY	API 2000	API 3000	API 5000	API 10000	API 15000
APPLICABILITY	from DN 1/2" to DN 24"	from DN 1/2" to DN 24"	from DN 1/2" to DN 24"	from DN 1/2" to DN 18"	from DN 1/2" to DN 12"

FULLY WELDED	API 2000	API 3000	API 5000
APPLICABILITY	from DN 1/2" to DN 24"	from DN 1/2" to DN 24"	from DN 1/2" to DN 16"

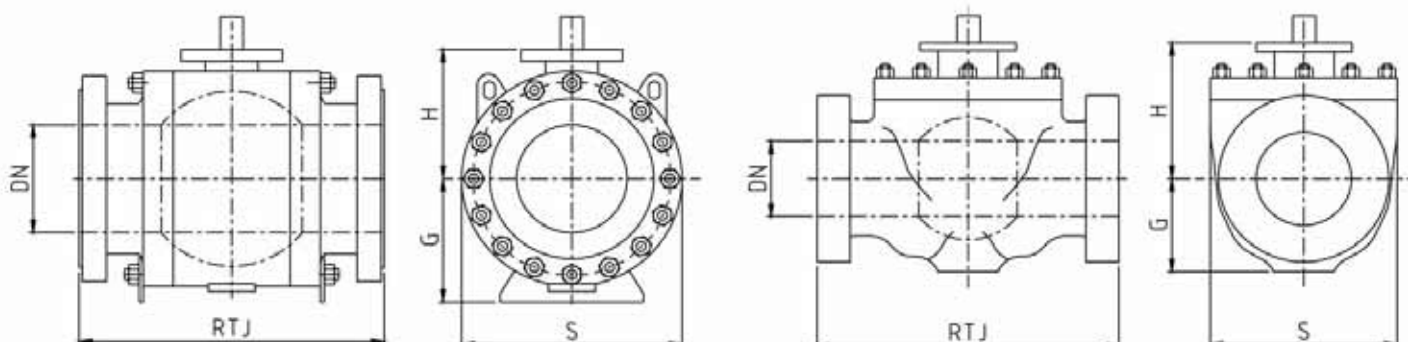
PRESSURE TEST VALUE API 6A

SIDE ENTRY BOLTED	RATED WORKING PRESSURE	HYDROSTATIC SHELL TEST	HIGH PRESSURE SEAT TEST	AIR SEAT TEST
API 2000	MPa 13,8 Psi 2000 Bar 138	MPa 20,7 Psi 3000 Bar 207	MPa 15,2 Psi 2200 Bar 152	MPa 0,69 Psi 100 Bar 6
API 3000	MPa 20,7 Psi 3000 Bar 207	MPa 31 Psi 4500 Bar 310	MPa 22,8 Psi 3300 Bar 227,5	MPa 0,69 Psi 100 Bar 6
API 5000	MPa 34,5 Psi 5000 Bar 345	MPa 51,7 Psi 7500 Bar 517,5	MPa 37,9 Psi 5500 Bar 379,5	MPa 0,69 Psi 100 Bar 6
API 10000	MPa 69 Psi 10000 Bar 690	MPa 103,5 Psi 15000 Bar 1034	MPa 75,9 Psi 11000 Bar 759	MPa 0,69 Psi 100 Bar 6
API 15000	MPa 103,5 Psi 15000 Bar 1035	MPa 155,1 Psi 22500 Bar 1551	MPa 113,7 Psi 16500 Bar 1137	MPa 0,69 Psi 100 Bar 6

STANDARD MATERIAL APPLICATIONS FOR GENERAL SERVICE AA or BB

COMPONENTS	API 2000	API 3000	API 5000	API 10000	API 15000
BODY	60K (414 Mpa)	60K (414 Mpa)	60K (414 Mpa)	60K (414 Mpa)	75K (517 Mpa)
CLOSURE	60K (414 Mpa)	60K (414 Mpa)	60K (414 Mpa)	60K (414 Mpa)	75K (517 Mpa)
BALL	60K (414 Mpa)	60K (414 Mpa)	60K (414 Mpa)	60K (414 Mpa)	75K (517 Mpa)
SEATS	60K (414 Mpa)	60K (414 Mpa)	60K (414 Mpa)	60K (414 Mpa)	75K (517 Mpa)
STEM	60K (414 Mpa)	60K (414 Mpa)	60K (414 Mpa)	60K (414 Mpa)	75K (517 Mpa)

API 6A - DIMENSIONS & WEIGHTS



API 2000

Rated Working Pressure 2000 psi (138 bar)

NOMINAL SIZE	VALVE BORE
INCHES	DN
2-1/16"	52.3
2-9/16"	65
3-1/8"	79.4
4-1/16"	103.2
5-1/8"	130
7-1/16"	179.3

SIDE ENTRY DESIGN				
RTJ	G	H	S Flange	Weights Kg
295	105	115	165	35
333	120	135	190	50
359	145	160	210	64
435	175	175	275	98
562	220	235	330	175
740	265	255	355	272

TOP ENTRY DESIGN				
RTJ	G	H	S Flange	Weights Kg
295	105	115	165	52
333	120	135	190	75
359	145	160	210	100
435	175	175	275	165
562	220	235	330	230
740	265	255	355	340

API 3000

Rated Working Pressure 3000 psi (207 bar)

NOMINAL SIZE	VALVE BORE
INCHES	D
2-1/16"	52.3
2-9/16"	65
3-1/8"	79.4
4-1/16"	103.2
5-1/8"	130
7-1/16"	179.3

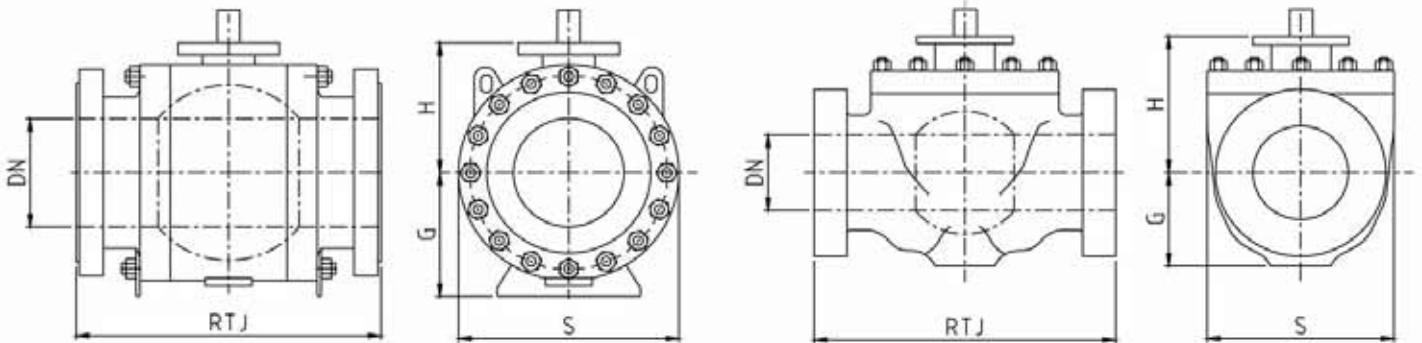
SIDE ENTRY DESIGN				
RTJ	G	H	S Flange	Weights Kg
371.5	120	130	215	52
422	150	160	245	78
435	165	200	240	94
511	185	250	290	160
613	240	300	350	262
803	320	325	380	375

TOP ENTRY DESIGN				
RTJ	G	H	S Flange	Weights Kg
371.5	120	130	215	68
422	150	160	245	95
435	165	200	240	135
511	185	250	290	215
613	240	300	350	330
803	320	325	380	420

Note:

1) Dimensions indicated in the above table are subject to change without notice.

API 6A - DIMENSIONS & WEIGHTS



API 5000

Rated Working Pressure 5000 psi (345 bar)

NOMINAL SIZE	VALVE BORE
INCHES	D
2-1/16"	52.3
2-9/16"	65
3-1/8"	79.4
4-1/16"	103.2
5-1/8"	130
7-1/16"	179.3

SIDE ENTRY DESIGN				
RTJ	G	H	S Flange	Weights Kg
371.5	135	190	215	85
422	165	205	245	145
473	250	225	265	210
549	310	255	310	335
727	420	280	375	530
813	530	340	395	780

TOP ENTRY DESIGN				
RTJ	G	H	S Flange	Weights Kg
371	135	190	215	115
422	165	205	245	220
473	250	225	265	285
549	310	255	310	410
727	420	280	375	615
813	530	340	395	1250

API 10000

Rated Working Pressure 10000 psi (690 bar)

NOMINAL SIZE	VALVE BORE
INCHES	DN
2-1/16"	52.3
2-9/16"	65
3-1/8"	79.4
4-1/16"	103.2
5-1/8"	130
7-1/16"	179.3
9"	203.2

SIDE ENTRY DESIGN				
RTJ	G	H	S Flange	Weights Kg
521	200	245	280	148
572	235	215	325	330
619	250	230	355	530
670	280	300	460	715
737	350	390	520	860
1219	400	560	786	2550
1422	440	655	960	4200

TOP ENTRY DESIGN				
RTJ	G	H	S Flange	Weights Kg
521	200	245	280	165
572	235	215	325	365
619	250	230	355	580
670	280	300	460	790
737	255	402	520	928
1219	380	550	786	2830
1422	440	655	960	4645

Note:

1) Dimensions indicated in the above table are subject to change without notice.

TECHNICAL FEATURES

GATE, GLOBE & CHECK VALVES

- **Full-Bore-Through Conduit**

Give a full round bore through the valve, no smaller than that of the pipe.

Minimizes pressure drop and turbulence is eliminated.

- **In-Line-Reparability**

Vitas plastic stem packing can be added to the packing box while the valve is under pressure.

Internal parts can be replaced without removing the valve from the line.

- **Low Operating Torque**

Upper and lower roller-thrust bearings on the stem are isolated from pressures, this making easier.

- **Parallel-Expanding-Gates**

Provide an extraordinarily high setting force against both the upstream and downstream seats.

- **Protected, Long-Life Seats**

Seats are fully protected from flow in both open and closed positions, allowing exceptionally long service.

- **Stem & Gate Coating**

A molybdenum disulphide film on the stem and gate reduces the friction coefficient and assures a lubrication for the valve lifetime.



Gate TC Valve Body of 12" API 10000



Swing Check API 10000 for Sub Sea application under assembly



Gate API 6A 4 1/16" API 10000

VITAS DIVISION PRODUCT RANGE API 6A (ISO 10423)

THROUGH CONDUID SLAB GATE VALVE	API 2000	API 3000	API 5000	API 10000	API 15000
APPLICABILITY	from DN 2" ¹ / ₁₆ to DN 21" ¹ / ₄	from DN 2" ¹ / ₁₆ to DN 20" ³ / ₄	from DN 1" ¹³ / ₁₆ to DN 21" ¹ / ₄	from DN 1" ¹³ / ₁₆ to DN 21" ¹ / ₄	from DN 1" ¹³ / ₁₆ to DN 18" ³ / ₄
THROUGH CONDUID EXPANDING GATE VALVE	API 2000	API 3000	API 5000	API 10000	API 15000
APPLICABILITY	from DN 2" ¹ / ₁₆ to DN 21" ¹ / ₄	from DN 2" ¹ / ₁₆ to DN 20" ³ / ₄	from DN 1" ¹³ / ₁₆ to DN 21" ¹ / ₄	from DN 1" ¹³ / ₁₆ to DN 21" ¹ / ₄	from DN 1" ¹³ / ₁₆ to DN 18" ³ / ₄
WEDGE GATE VALVE	API 2000	API 3000	API 5000	API 10000	API 15000
APPLICABILITY	from DN 2" ¹ / ₁₆ to DN 21" ¹ / ₄	from DN 2" ¹ / ₁₆ to DN 20" ³ / ₄	from DN 1" ¹³ / ₁₆ to DN 21" ¹ / ₄	from DN 1" ¹³ / ₁₆ to DN 21" ¹ / ₄	from DN 1" ¹³ / ₁₆ to DN 18" ³ / ₄
GLOBE VALVE	API 2000	API 3000	API 5000	API 10000	API 15000
APPLICABILITY	from DN 2" ¹ / ₁₆ to DN 21" ¹ / ₄	from DN 2" ¹ / ₁₆ to DN 20" ³ / ₄	from DN 1" ¹³ / ₁₆ to DN 21" ¹ / ₄	from DN 1" ¹³ / ₁₆ to DN 21" ¹ / ₄	from DN 1" ¹³ / ₁₆ to DN 18" ³ / ₄
SWING CHECK VALVE	API 2000	API 3000	API 5000	API 10000	API 15000
APPLICABILITY	from DN 2" ¹ / ₁₆ to DN 21" ¹ / ₄	from DN 2" ¹ / ₁₆ to DN 20" ³ / ₄	from DN 1" ¹³ / ₁₆ to DN 21" ¹ / ₄	from DN 1" ¹³ / ₁₆ to DN 21" ¹ / ₄	from DN 1" ¹³ / ₁₆ to DN 18" ³ / ₄

STANDARD MATERIAL APPLICATIONS FOR GENERAL SERVICE AA or BB

THROUGH CONDUID SLAB GATE VALVE	API 2000	API 3000	API 5000	API 10000	API 15000
BODY	60K (414MPa)	60K (414MPa)	60K (414MPa)	60K (414MPa)	75K (517MPa)
BONNET	60K (414MPa)	60K (414MPa)	60K (414MPa)	60K (414MPa)	75K (517MPa)
SLAB – WEDGE – DISC	60K (414MPa)	60K (414MPa)	60K (414MPa)	60K (414MPa)	75K (517MPa)
SEATS	60K (414MPa)	60K (414MPa)	60K (414MPa)	60K (414MPa)	75K (517MPa)
STEM - PIN	60K (414MPa)	60K (414MPa)	60K (414MPa)	60K (414MPa)	75K (517MPa)

THROUGH CONDUIT SLAB & EXPANDING GATE VALVE DIMENSIONS

API 2000

Rated Working Pressure 2000 psi (13.8 MPa – 138 bar)

Size (Inch)	øA	H (to H.W.)	LRJ	D	øV	Weight RJ [Kg]
2" 1/16	52,3 2.06"	485 19,1"	295,1 11,62"	133 5,25"	254 10"	59
2" 9/16	65 2,56"	514 20,25"	333,2 13,12"	155 6,1"	330 13"	80
3" 1/8	79,2 3,12"	584 23"	358,6 14,12"	190,5 7,5"	406 16"	111
4" 1/16	103,1 4,06"	676 26,6"	434,8 17,12"	235 9,25"	406 16"	164
5" 1/8	130,2 5,12"	730 28,7"	562 22,12"	285 11,2"	508 20"	270
7" 1/16	179,3 7,06"	880 34,6"	664 26,12"	390 15,3"	508 20"	450

API 3000

Rated Working Pressure 3000 psi (20.7 MPa – 207 bar)

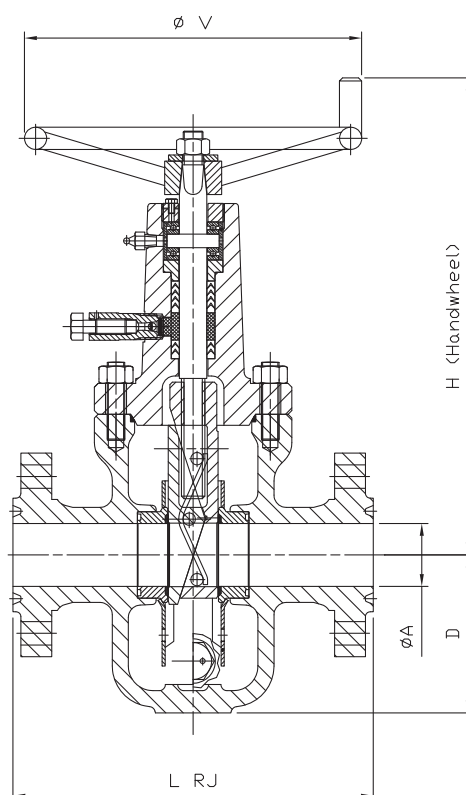
Size (Inch)	øA	H (to H.W.)	LRJ	D	øV	Weight RJ [Kg]
2" 1/16	52,3 2.06"	498 19,6"	371,3 14,62"	150 5,5"	330 13"	82
2" 9/16	65 2,56"	524 20,6"	422,1 16,62"	165 6,5"	406 16"	115
3" 1/8	79,2 3,12"	584 23"	434,5 17,12"	190,5 7,5"	406 16"	127
4" 1/16	103,1 4,06"	676 26,6"	511 20,12"	235 9,25"	508 20"	236
5" 1/8	130,2 5,12"	730 28,7"	613 24,12"	290 11,4"	508 20"	290
7" 1/16	179,3 7,06"	880 34,6"	714 28,12"	400 15,74"	610 24"	480

API 5000

Rated Working Pressure 5000 psi (34.5 MPa – 345 bar)

Size (Inch)	øA	H (to H.W.)	LRJ	D	øV	Weight RJ [Kg]
2" 1/16	52,3 2.06"	498 19,6"	371,3 14,62"	140 5,5"	330 13"	82
2" 9/16	65 2,56"	524 20,6"	422,1 16,62"	165 6,5"	406 16"	115
3" 1/8	79,2 3,12"	584 23"	473 18,62"	197 7,75"	406 16"	145
4" 1/16	103,1 4,06"	676 26,6"	549,1 21,62"	241 9,5"	508 20"	236
5" 1/8	130,2 5,12"	685 31,3"	727 28,62"	315 12,2"	610 24"	520
7" 1/16	179,3 7,06"	980 38,6"	813 32"	400 15,75"	760 30"	1430

- Outside Screw and Yoke can be furnished.
- Valves can be equipped with Bevel Gear Operator
- Bore "A" can be supply at customer request
- Hydraulic, pneumatic or electric actuation at request
- Dimensions are subject to change: we reserve the right to change design, specification and materials without notice.
- About others pressure and size, please contact our Engineering Dept.



API 10000

Rated Working Pressure 10000 psi (69 MPa – 690 bar)

Size (Inch)	øA	H (to H.W.)	LRJ	D	øV	Weight RJ [Kg]
1" 13/16	46 1.81"	490 19,3"	464 18,25"	145 5,71"	400 15,7"	125
2" 1/16	52,3 2.06"	415 16,3"	521 20,5"	175 6,9"	400 15,7"	210
2" 9/16	65 2,56"	690 27,16"	565 22,25"	230 9"	500 19,9"	230
3" 1/16	77,7 3,06"	1015 40"	619 24,38"	270 10,6"	600 23,6"	380
4" 1/16	103,1 4,06"	1015 40"	670 26,38"	270 10,6"	600 23,6"	660
5" 1/8	130 5,12"	1145 45"	737 29"	360 14,17"	600 23,6"	1030
7" 1/16	179,3 7,06"	1250 49,2"	889 35"	525 20,7"	750 29,5"	2060
9"	228,6 9"	1170 55,9"	1200 47,27"	615 24,2"	750 29,5"	3300
11"	228 11"	1757 69,2"	1181 46,5"	720 28,3"	750 28,5"	7200

API 15000

Rated Working Pressure 15000 psi (103.5 MPa – 1035 bar)

Size (Inch)	øA	H (to H.W.)	LRJ	D	øV	Weight RJ [Kg]
1" 13/16	46 1.81"	520 20,5"	457 18"	160 6,3"	508 20"	200
2" 1/16	52,3 2.06"	540 21,25"	483 19"	170 6,7"	508 20"	220
2" 9/16	65 2,56"	620 24,4"	533 21"	190 7,5"	610 24"	350
3" 1/16	77,7 3,06"	700 27,6"	598 23,56"	260 10,2"	610 24"	750
4" 1/16	103,1 4,06"	840 33,1"	737 29"	350 13,8"	610 24"	1100

WEDGE GATE VALVE DIMENSIONS

API 2000

Rated Working Pressure 2000 psi (13.8 MPa – 138 bar)

Size (Inch)	øA	H (to handwheel)	LRJ	øV	Weight RJ [Kg]
2" 1/16	52.3 2.06"	445 17.5"	295.1 11.62"	300 11.8"	80
2" 9/16	65 2.56"	515 20.3"	333.2 13.12"	400 15.7"	95
3" 1/8	79.2 3.12"	650 25.6"	358.6 14.12"	500 19.7"	115
4" 1/16	103.1 4.06"	700 27.6"	434.8 17.12"	500 19.7"	190
5" 1/8	130.2 5.12"	950 37.4"	562 22.12"	750 29.5"	400
7" 1/16	179.3 7.06"	1110 43.7"	664 26.12"	750 29.5"	650
13" 5/8	316 12.44"	1520 59.8"	714 28.12"	750 29.5"	1700

API 3000

Rated Working Pressure 3000 psi (20.7 MPa – 207 bar)

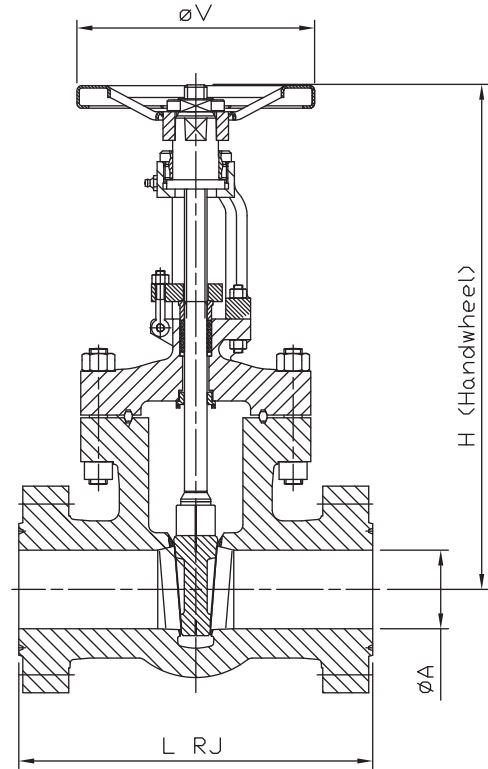
Size (Inch)	øA	H (to handwheel)	LRJ	øV	Weight RJ [Kg]
2" 1/16	52.3 2.06"	480 18.9"	371.3 14.62"	400 15.7"	90
2" 9/16	65 2.56"	590 23.2"	422.1 16.62"	500 19.7"	170
3" 1/8	79.2 3.12"	750 29.5"	434.5 17.12"	600 23.6"	250
4" 1/16	103.1 4.06"	800 31.5"	511 20.12"	750 29.5"	400
5" 1/8	130.2 5.12"	980 38.6"	613 24.12"	750 29.5"	700
7" 1/16	179.3 7.06"	1110 43.7"	714 28.12"	750 29.5"	1100
13" 5/8	316 12.44"	1520 59.8"	714 28.12"	750 29.5"	1950

API 5000

Rated Working Pressure 5000 psi (34.5 MPa – 345 bar)

Size (Inch)	øA	H (to handwheel)	LRJ	øV	Weight RJ [Kg]
2" 1/16	52.3 2.06"	500 19.7"	371.3 14.62"	600 23.6"	290
2" 9/16	65 2.56"	750 29.5"	422.1 16.62"	750 29.5"	330
3" 1/8	79.2 3.12"	850 33.5"	473 18.62"	750 29.5"	500
4" 1/16	103.1 4.06"	920 36.2"	549.1 21.62"	750 29.5"	900
5" 1/8	130.2 5.12"	1100 43.3"	727 28.62"	750 29.5"	1800
7" 1/16	179.3 7.06"	1200 90.6"	813 32"	750 29.5"	2300

- Valves can be equipped with Bevel Gear Operator
- Bore "A" can be supply at customer request
- Hydraulic, pneumatic or electric actuation at request
- Dimensions are subject to change: we reserve the right to change design, specification and materials without notice.
- About others pressure and size, please contact our Engineering Dept.



Our bunker at Vitas plant

LIFT CHECK AND GLOBE VALVE DIMENSIONS

API 2000

Rated Working Pressure 2000 psi (13.8 MPa – 138 bar)

Size (Inch)	øA	H (to h.w.)	H1	M	LRJ	øV	Weight RJ [Kg]
2" 1/16	52.3 2.06"	570 22.4"	270 10.6"	220 8.7"	295.1 11.62"	600 23.6"	80
2" 9/16	65 2.56"	610 24"	280 11"	250 9.8"	333.2 13.12"	600 23.6"	100
3" 1/8	79.2 3.12"	650 25.6"	300 11.8"	290 11.4"	358.6 14.12"	750 29.5"	135
4" 1/16	103.1 4.06"	740 29.1"	350 13.8"	330 13"	434.8 17.12"	750 29.5"	280
7" 1/16	179.3 7.06"	900 35.4"	400 15.7"	380 15"	562 22.1"	750 29.5"	650

API 3000

Rated Working Pressure 3000 psi (20.7 MPa – 207 bar)

Size (Inch)	øA	H (to h.w.)	H1	M	LRJ	øV	Weight RJ [Kg]
2" 1/16	52.3 2.06"	570 22.4"	270 10.6"	220 8.7"	371.3 14.62"	600 23.6"	90
2" 9/16	65 2.56"	750 29.5"	330 13"	280 11"	422.1 16.62"	600 23.6"	150
3" 1/8	79.2 3.12"	800 31.5"	350 13.8"	350 13.8"	384 15.1"	750 29.5"	230
4" 1/16	103.1 4.06"	850 33.5"	390 15.4"	400 15.7"	460 18.1"	750 29.5"	450
7" 1/16	179.3 7.06"	1300 51.2"	600 23.6"	480 18.9"	613 24.1"	750 29.5"	1100

API 5000

Rated Working Pressure 5000 psi (34.5 MPa – 345 bar)

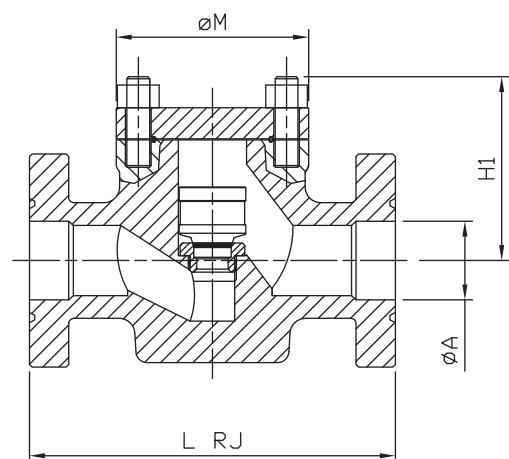
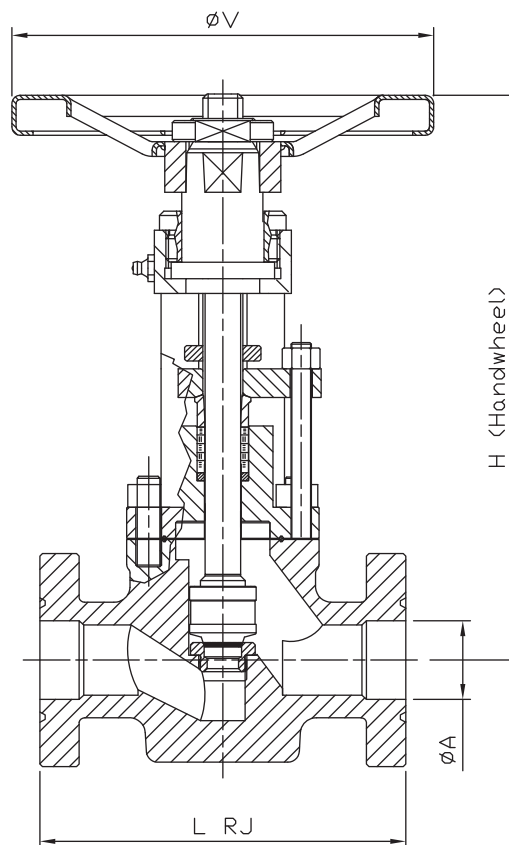
Size (Inch)	øA	H (to h.w.)	H1	M	LRJ	øV	Weight RJ [Kg]
2" 1/16	52.3 2.06"	700 27.6"	350 13.8"	270 10.6"	371.3 14.62"	600 23.6"	220
2" 9/16	65 2.56"	800 31.5"	390 15.4"	310 12.2"	422.1 16.62"	750 29.5"	300
3" 1/8	79.2 3.12"	900 35.4"	440 17.3"	370 14.6"	473 18.62"	750 29.5"	500
4" 1/16	103.1 4.06"	1350 53.1"	570 22.4"	510 20.1"	549.1 21.62"	750 29.5"	900
7" 1/16	179.3 7.06"	1800 70.9"	780 30.7"	700 27.6"	711 28"	750 29.5"	1400

API 10000

Rated Working Pressure 10000 psi (69 MPa – 690 bar)

Size (Inch)	øA	H (to h.w.)	H1	M	LRJ	øV	Weight RJ [Kg]
1" 13/16	46 1.81"	500 19.7"	260 10.2"	210 8.3"	464 18.25"	600 26.6"	220
2" 1/16	52.3 2.06"	520 20.5"	280 11"	220 8.7"	521 20.5"	600 26.6"	300
2" 9/16	65 2.56"	600 26.6"	310 12.2"	270 10.7"	565 22.25"	600 26.6"	600
3" 1/16	77.7 3.06"	780 30.7"	420 16.5"	320 12.6"	619 24.38"	600 26.6"	600
4" 1/16	103.1 4.06"	520 20.5"	520 20.5"	410 16.1"	670 26.38"	750 29.5"	750
7" 1/16	179.3 7.06"	680 26.8"	680 26.8"	550 21.6"	889 35"	750 29.5"	750

- Valves can be equipped with Bevel Gear Operator
- Bore "A" can be supply at customer request
- Hydraulic, pneumatic or electric actuation at request
- Dimensions are subject to change: we reserve the right to change design, specification and materials without notice.
- About others pressure and size, please contact our Engineering Dept.

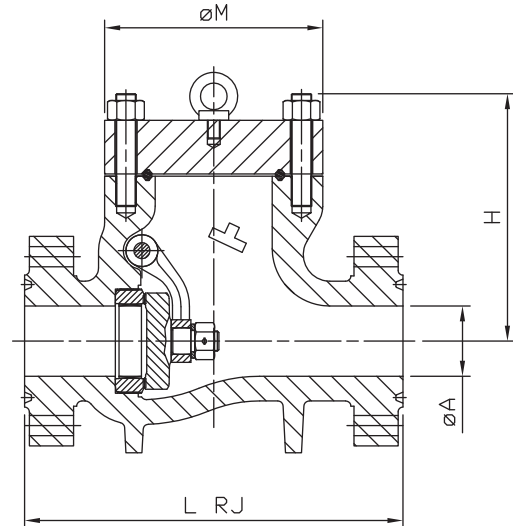


REGULAR AND FULL OPENING SWING CHECK VALVE DIMENSIONS

API 2000

Rated Working Pressure 2000 psi (13.8 MPa – 138 bar)

Size (Inch)	øA	H	øM	LRJ	Weight RJ [Kg]
2" 1/16	52,3 2.06"	190 7.5"	155 6.1"	295,1 11.62"	45
2" 9/16	62.7 2.47"	230 9"	180 7.1"	333,2 13.12"	65
3" 1/8	78 3.07"	290 11.5"	220 8.7"	358,6 14.12"	90
4" 1/16	102,3 4.03"	330 13"		434,8 17.12"	115
7" 1/16	146,3 5.76"	457 18"		562	260



API 3000

Rated Working Pressure 3000 psi (20.7 MPa – 207 bar)

Size (Inch)	øA	H	øM	LRJ	Weight RJ [Kg]
2" 1/16	49.3 1.94"	241 9.5"	185 7.3"	371.3 14.62"	60
2" 9/16	59 2.32"	254 10"	200 7.9"	422.1 16.62"	90
3" 1/8	73.7 2.90"	318 12.5"	230 9"	384 15.12"	110
4" 1/16	97.2 3.83"	394 15.5"	270 10.6"	460 18.12"	165
7" 1/16	146.3 5.76"	483 19"	390 15.35"	613 24.12"	390

API 5000

Rated Working Pressure 5000 psi (34.5 MPa – 345 bar)

Size (Inch)	øA	H	øM	LRJ	Weight RJ [Kg]
2" 1/16	43 1.69"	254 10"	185 7.3"	371.3 14.62"	65
2" 9/16	54 2.12"	280 11"	200 7.9"	422.1 16.62"	100
3" 1/8	66.7 2.62"	330 13"	220 8.7"	473 18.62"	130
4" 1/16	87.4 3.44"	368 14.5"	290 11.4"	549.1 21.62"	210
7" 1/16	132 5.19"	508 20"	410 16.15"	711 28"	515

API 10000

Rated Working Pressure 10000 psi (69 MPa – 690 bar)

Size (Inch)	øA	H	øM	LRJ	Weight RJ [Kg]
1" 13/16	46 1.81"	240 9.5"	230 9"	464 18.25"	130
2" 1/16	52.3 2.06"	360 14.2"	300 11.8"	521 20.5"	170
2" 9/16	65 2.56"	390 15.4"	320 12.6"	565 22.25"	320
3" 1/16	77.7 3.06"	400 15.7"	330 13"	619 24.38"	550
4" 1/16	103.1 4.06"	430 17"	370 14.6"	670 26.38"	840
5" 1/8	130 5.12"	475 18.7"	420 16.5"	737 29"	1185
7" 1/16	179.3 7.06"	520 20.5"	500 19.7"	889 35"	1550

- Valves can be equipped with Bevel Gear Operator
- Bore "A" can be supply at customer request
- Hydraulic, pneumatic or electric actuation at request
- Dimensions are subject to change: we reserve the right to change design, specification and materials without notice.
- About others pressure and size, please contact our Engineering Dept.

TRIM EXPLANATION FOR VITAS DIVISION GATE VALVES

API Spec. 6A Material Class	VITAS Trim Code	DESCRIPTION AND SERVICE TEMPERATURE
AA	B-1	<p>STANDARD TRIM For essentially no corrosive liquids or gases. Typical examples are crude and refined oils, natural or refined gases and processed hydrocarbons. Typical uses are wellheads, manifolds, flow lines and other similar installations requiring a through conduit valve. The temperature limitations are 0° to 250°F, (-18° to 121°C).</p>
BB	B-2	<p>STAINLESS TRIM For substantially the same service as 8-1 but where the corrosion resistance of 13 Chrome Stainless Steel internal parts are desirable. Also usable for mildly corrosive fluids and gases when limited corrosion of the internal body surfaces can be tolerated. The temperature limitations are 0° to 250°F, (-18° to 121°C). Recommended when partial pressure of CO₂ is greater than 30.</p>
CC	B-3	<p>FULL STAINLESS TRIM For only liquid or gaseous product for which the resistance of the 13 Chrome Stainless is adequate. Also used where the resistance of Stainless Steel is desirable from the standpoint of product purity. The temperature limitations are 0° to 250°F (-18° to 121°C). Recommended when partial pressure of CO₂ is greater than 30.</p>
EE	B-4	<p>SOUR GAS AND OIL Primarily for sour gas and oil where resistance to Hydrogen Sulphide embitterment is required. Also suitable for other chemicals, products or hydrocarbons when H₂S is present. May be used when CO₂ is present in smaller amount than H₂S. The temperature limitations are 0° to 250°F (-18° to 121°C).</p>
FF	B-6	<p>STAINLESS SOUR GAS AND OIL TRIM Primarily for sour gas and oil when the CO₂ content exceeds the H₂S content. It is intended to provide resistance to the metal loss type of corrosion usually associated with CO₂ plus resistance to Hydrogen Sulphide embitterment. The temperature limitations are 0° to 250°F (18° to 121°C).</p>
AA	B-1.1	<p>LOW TEMPERATURE-STANDARD TRIM-GENERAL OILFIELD For essentially no corrosive liquids or gases. Typical examples are crude and refined oils, natural or refined gases and processed hydrocarbons. Typical uses are wellheads, manifolds, flow lines and other similar installations requiring a through conduit valve. The temperature limitations are -50° to 180°F (-46° to 82°C).</p>
BB	B-4.1	<p>LOW TEMPERATURE-SOUR GAS AND OIL Primarily for sour gas and oil where resistance to Hydrogen Sulphide embitterment is required. Also suitable for other chemicals, products or hydrocarbons when H₂S is present. May be used when CO₂ is present in smaller amount than H₂S. The temperature limitations are -50° to 180°F (-46 to 82°C).</p>

TRIM EXPLANATION FOR VITAS DIVISION GATE VALVES

Services	Trim Code	Body & Bonnet	Bonnet Seal Ring	Gate & Segment	Seats	Stem	Gate Spring	Studs & Nuts	Packing Set V-Rings
General Oil Field Oil & Gas	B-1	API Type 2 or 3 Steel	C1020	4130 (2)	4130 (2)	4130 (2)	Inconel 600	A193-B7 A194-2H	Teflon
General Service Slight Corrosion CO ₂	B-2	API Type 2 or 3 Steel	C1020	410 SS EN55 (1)	410 SS EN55 (1)	410 SS (2)	Inconel 600	A193-B7 A194-2H	Teflon
Corrosive Service High CO ₂ no H ₂ S	B-3	ASTM A217 CA-15 410 SS	AISI 316	410 SS EN55 (1)	410 SS EN55 (1)	17-4PH SS Aged Max. Rc33 (2)	Inconel 600	A193-B7 A194-2H	Teflon + 25% Glass
Sour Gas & Oil H ₂ S Meets NACE MR 0175-99	B-4	API Type 2 or 3 Steel Max. Rc22	AISI 316	17-4PH SS Aged Max. Rc33 (2) (3)	17-4PH SS Aged Max. Rc33 (2) (3)	17-4PH SS Aged Max. Rc33 (2)	Inconel X750	A193-B7M A194-2HM	Teflon + 25% Glass
Sour Gas & Oil H ₂ S + CO ₂ Meets NACE MR 0175-99	B-6	ASTM A217 CA-15 410 SS Max. Rc22	AISI 316	17-4PH SS Aged Max. Rc33 (2) (3)	17-4PH SS Aged Max. Rc33 (2) (3)	17-4PH SS Aged Max. Rc33 (2)	Inconel X750	A193-B7M A194-2HM	Teflon + 25% Glass
General Oil Field Oil & Gas To -50°F	B-1.1	API Type 2 or 3 Steel Quenched & Tempered Impact Tested	AISI 316	4130 (2)	4130 (2)	4130 (2)	Inconel 600	A320-L7 A194-2H	Teflon + 40% Glass
Sour Gas & Oil H ₂ S + CO ₂ To -50°F Meets NACE MR 0175-99	B-4.1	API Type 2 or 3 Steel Quenched & Tempered Impact Tested	AISI 316	17-4PH SS Aged Max. Rc33 (2) (3)	17-4PH SS Aged Max. Rc33 (2) (3)	17-4PH SS Aged Max. Rc33 (2)	Inconel X750	A320-L7M A194-Gr.4	Teflon + 40% Glass
(1) - Electroless Nickel Plated (2) - MoS ₂ coating (3) - Hard faced as required									



Gate TC 7 1/16" API 10.000 under testing



Gate TC Valve Body of 7 1/16" API 10000



Side Entry Ball Valve 12" API 10000 under assembly



Gate TC Valve of 12" Fully Assembled with Pneumatic Actuator under machining



Our Bunker at Valvitalia plant

A Long Experience in Energy Equipment and one Goal:

The Customer's satisfaction.



Pavia Plant

Valvitalia S.p.A.

Via Tortona, 69
27055 Rivanazzano (PV) - Italy
Phone +39.0383.945911
Fax +39.0383.9459962
e-mail: info@valvitalia.com
www.valvitalia.com



Vicenza Plant

Valvitalia S.p.A.

VITAS Division

Via Soastene, 24
36040 Brendola (VI) - Italy
Phone +39.0444.749111
Fax +39.0444.401498
e-mail: info.vitas@valvitalia.com
www.valvitalia.com



VALVITALIA S.p.A.

Via Tortona, 69 - 27055 Rivanazzano (PV) Italy
Phone: +39.0383.945911 - Fax: +39.0383.9459962
E-mail: info@valvitalia.com
Web site: www.valvitalia.com